



drs

Digital Retinography System



centervue

Smartly Simple

Introducing Drs

DRS is the easiest non-mydratic, digital retinal imager in the market. Thanks to its fully automated operation, DRS requires minimal operator training. Its compact, ergonomic design and low power flash help ensure patient comfort. DRS is conceived to maximize patients flow and it is entirely operated through its intuitive touch-screen interface. It supports single -or multi- field acquisition protocols, providing seven different 45° fields. It can be used both for screening and diagnosis.

drs
Digital Retinography System



DRS Image Gallery

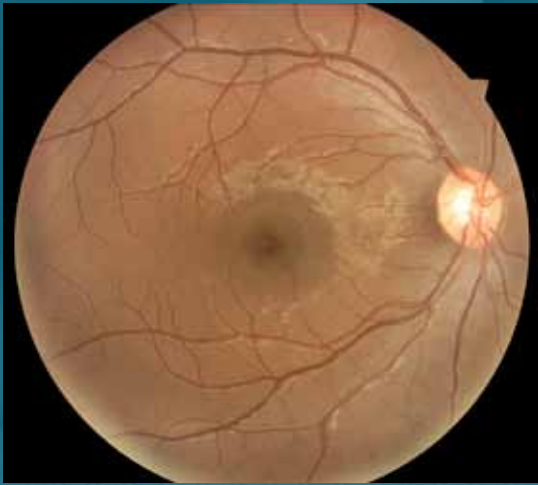


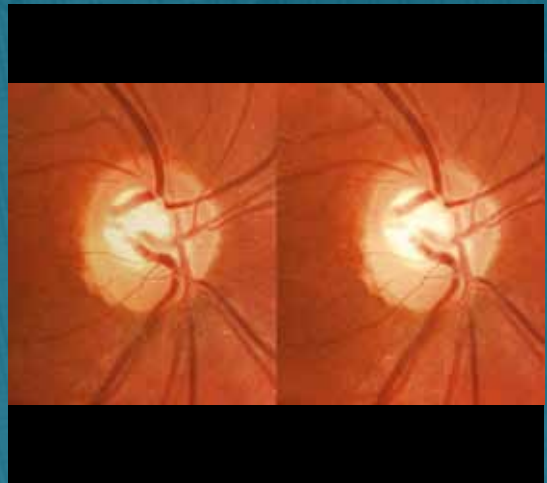
PHOTO OF YOUNG HEALTHY RETINA



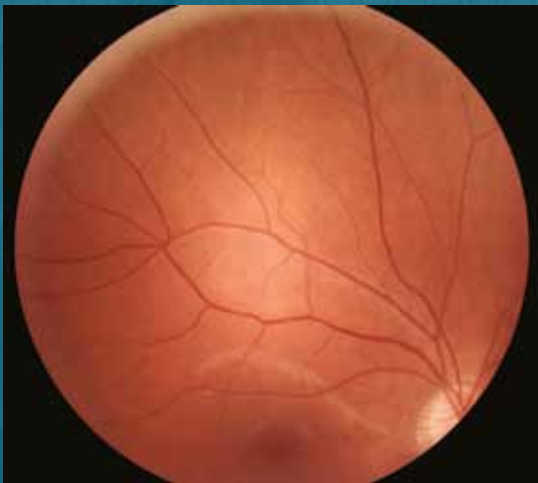
RED-FREE PHOTO OF HEALTHY RETINA



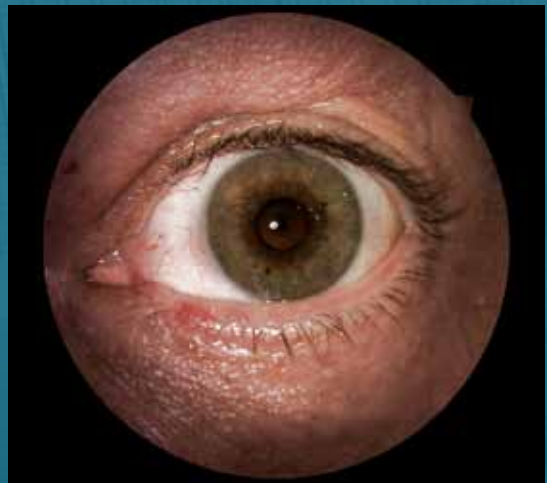
DETAIL OF THE OPTIC DISK



STEREO PAIR



PERIPHERAL FIELDS



EXTERNAL EYE

Additional Services

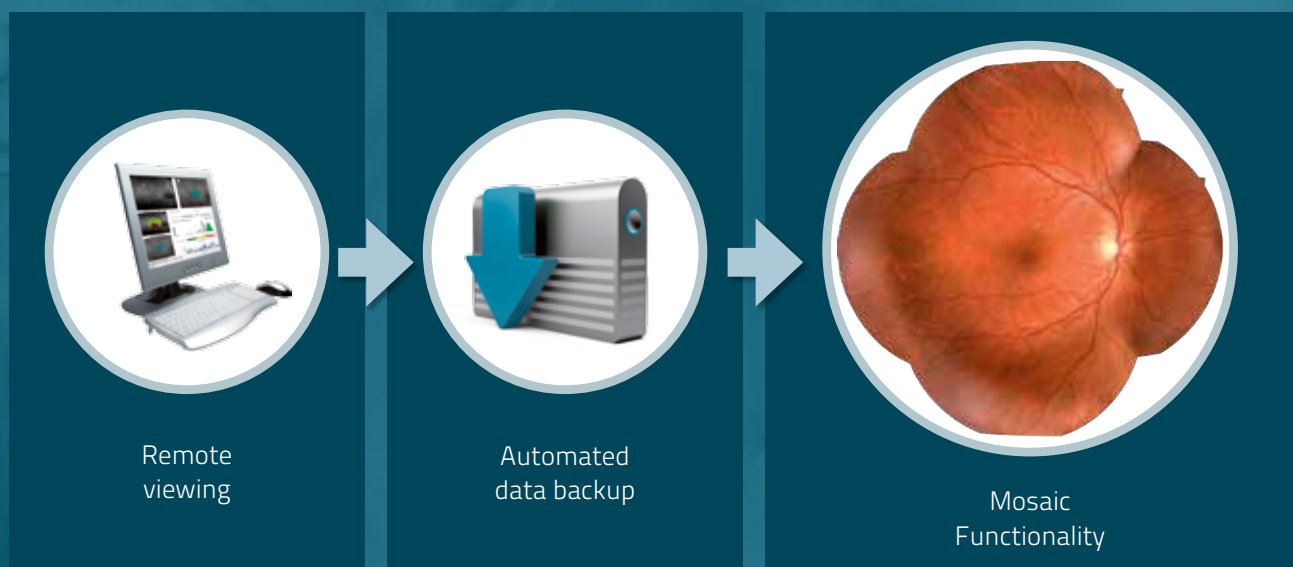
EKN: The Eye Knowledge Network



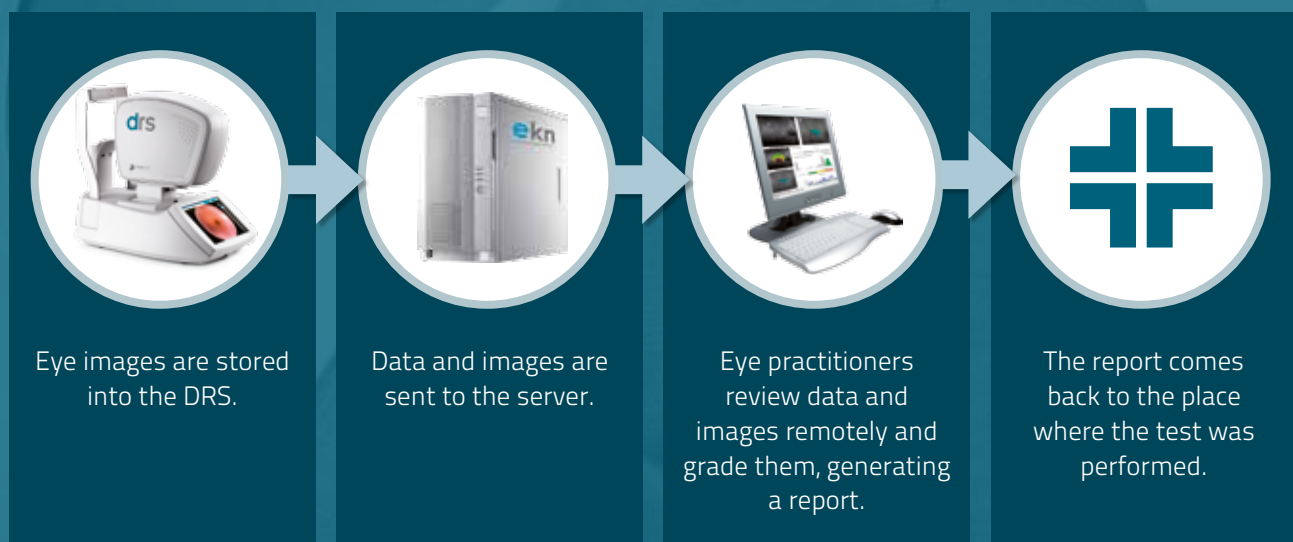
EKN is a service from CenterVue that can be provided in two different solutions:

- EKN CLOUD: DRS data are encrypted and transferred into the cloud for backup purposes and can be viewed using the Internet browser.
- EKN TELEMEDICINE: EKN Cloud + Remote Assessment: Eye care practitioners can assess uploaded retinal images, then create and upload reports describing clinical conditions.

EKN Cloud



EKN Telemedicine



Benefits

Benefits at a glance

- Extreme ease of use: patient auto-sensing, auto-alignment, auto-focus, auto flash adjustment, auto-capture
- Short exam time: captures both eyes in 1 min (single field)
- High quality images
- Minimal training required
- Compact & clean design
- No additional PC required
- Touch-screen operation

Everywhere at any time

- View images from any PC or tablet
- Internet-connected
- Wi-Fi and Ethernet connectivity
- Cloud backup available
- Export to USB and remote folder (for import into EMR), DICOM, JPG, PDF

Technical specifications*

Retinal Imaging

- Field of view: 45° x 40°
- Mosaic up to 80° field of view
- Non mydriatic operation
- 3.8 mm minimum pupil size
- Fixation target: 7 internal LEDs
- Operating distance: 37 mm
- Sensor size: 5 MPixel (2592x1944)
- Sensor resolution: 48 pixels/deg

Other features

- Patient presence sensor
- Motorized chin-rest
- Automatic alignment using two pupil cameras
- Auto-focus (adjustment range -15D to +15D)
- Auto-flash level adjustment
- Low power flash
- 10.4" touch-screen color display
- Embedded PC (160 GB hard disk)

- Multiple fields acquisition
- Stereo Pair
- External Eye

Dimensions

- Weight: 19 Kg (42 lbs)
- Size: 58 x 55 x 33 cm (23" x 22" x 13")

Accessories

- Power cord
- Spare fuses
- Dust cover

* Specifications are subject to change without notice for improvement.



drs

Digital Retinography System

CenterVue SpA

Via San Marco 9H
35129 Padova - Italy

Ph: +39 049 7396 147
Fax +39 049 7396 148

info@centervue.com
www.centervue.com

CenterVue Inc.

43301 Osgood Road
Fremont, CA 94538 - USA

Ph: +1 408 988 8404
Fax: +1 408 716 3271

infous@centervue.com
www.centervue.com

Please download the US version of this brochure at www.centervue.com